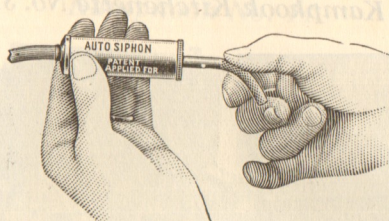


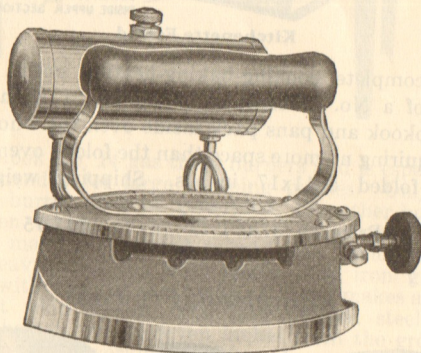
Auto Siphon



A convenient device for drawing gasoline from automobile supply tank for filling Kampkooks, lanterns, etc. The only practical device for filling automobile vacuum tanks. Indispensible to motor tourists for the convenience it affords in an emergency for securing gasoline from a passing car. Simply insert hose in gasoline tank, pull out plunger and gasoline begins to flow. Made of brass, nickel plated, comes with 30 inch gasoline hose.

Price.....\$1.00

Gasoline Flat Irons



Heats while it works, works while it heats. Cuts ironing time in two. Burns gasoline, both ends pointed, large tank at side out of the way. Heat regulated as wanted. Heavily nickel plated and polished. Comes with nickel plated iron stand. Shipping weight 8½ lbs.

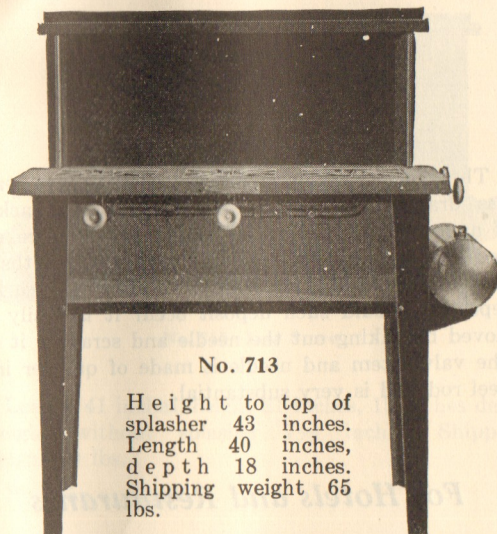
Price.....\$6.00

Tailor's Iron

For tailor shops, cleaners, etc. Has large fuel tank. Operates on same principle and finished like the small size. Very handy and economical. Net weight 17 lbs.

Price.....\$14.00

ALBERT LEA Kitchen Kook Stoves



No. 713

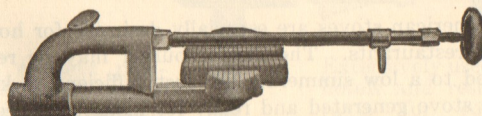
Height to top of
splasher 43 inches.
Length 40 inches,
depth 18 inches.
Shipping weight 65
lbs.

American Gasoline Gas Stoves place the convenience of gas service within reach of every home. They make their own gas from common gasoline at a cost of one dollar or less per thousand cubic feet. Gasoline is forced from the tank to the burner by air pressure secured by means of the pump furnished with each stove resulting in far more heat than can be secured from an oil or gas stove. They produce a clear blue flame entirely free from smoke, soot or odor. Heat instantly regulated to any desired temperature.

The first or master burner when lighted produces gas for the other burners which may be turned on or off like a gas stove. American Stoves are strong and rigid, finished in black baked enamel with polished brass tank.

Price on application.

Our New Ventilated Burner



The above illustration of the master burner shows the generator, manifold and our new ventilated type of slotted burner. The outer edge of a gas flame, or that part of it which comes in contact and mixes with the surrounding air is always hottest because the combustion is better. The open construction of this ventilated burner draws air up between its various sections resulting in perfect combustion, greater heat and no gas odor. The burner itself is cast in one piece and cannot leak. All burners are of this type.